



APPENDIX – ViaCon STORMWATER SOLUTIONS

# Corrugated steel tanks

# Singlestore

ViaCon Singlestore allows flexible design. The T sections, elbows, access shafts and inlets are all factory fitted, so for the contractor assembling the tank is a simple pipe laying exercise.



## SINGLESTORE COUPLING BAND AND GASKET

The pipes are joined together with a coupling band and gasket system. This is approved by Wrc for "sewers for adoption standards".

# Twinstore

ViaCon Twinstore is specifically designed to reduce the footprint of the tank. The excavation is lined with a geomembrane clay liner and the joints have perforated coupling bands and a geotextile wrap. This allows the water to free flow from the joint into the backfill. The backfill is a single size stone, 20 mm – 40mm, which crates a void for additional storage.



# Twinstore



# Soakaway

When ground conditions are suitable ViaCon can supply a perforated system which will allow water to permeate through the ground. The pipes are wrapped in a geotextile to allow water to pass through and to stop small fines entering into the system.



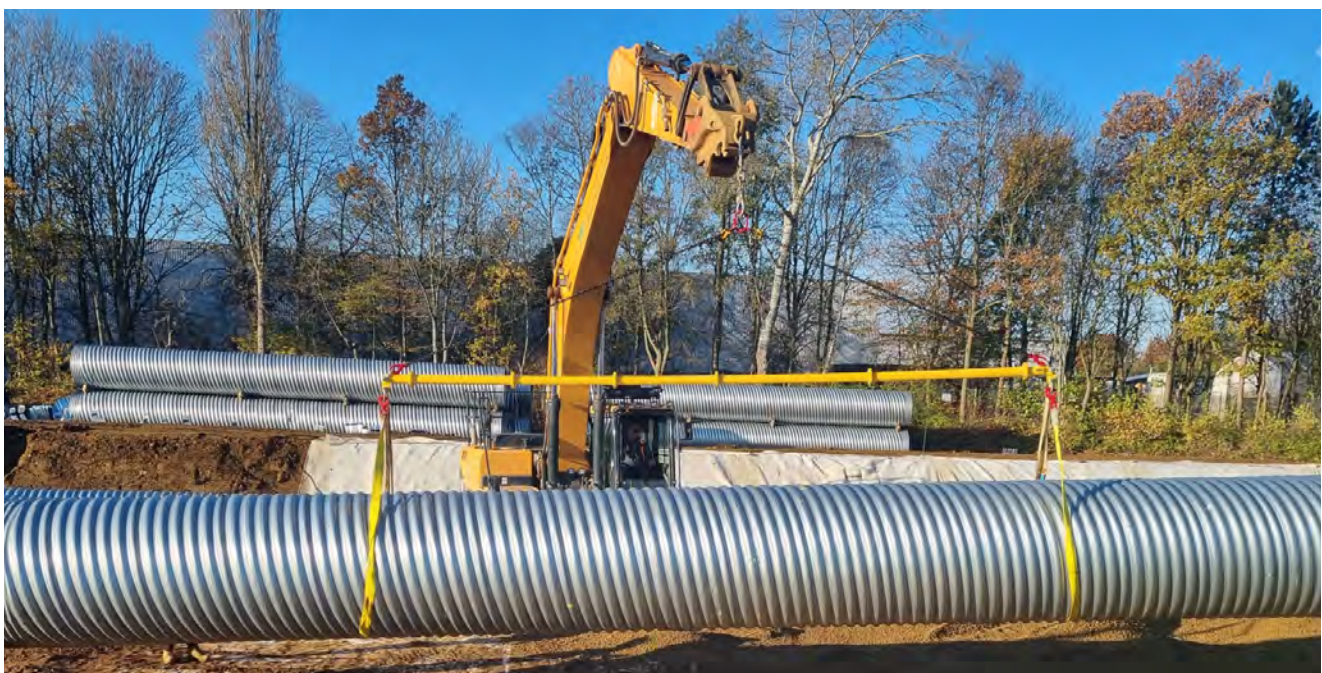
# Sweeping inlets

ViaCons flexible design, allows you to sweep your underground pipework into the tank at any angle between 30° and 150° – this feature reduces manholes.



# 14 m pipes

We can produce the pipe sections in 14m lengths, significantly reducing the number of joints and speeding up the installation time



# Plug and play chambers



ViaCons One piece chambers, complete with flow regulators, pumps or even design with perforated pipe to be used as a soakaway. Tested and approved by Wrc, the chambers come complete with a 3 point lifting ring.



## Vortex separator

- Easy integration
- Easy Maintenance
- Easy installation – plug and play
- Optimised Flow
- Tested to high standards

# ViaCon 3 in 1 solution

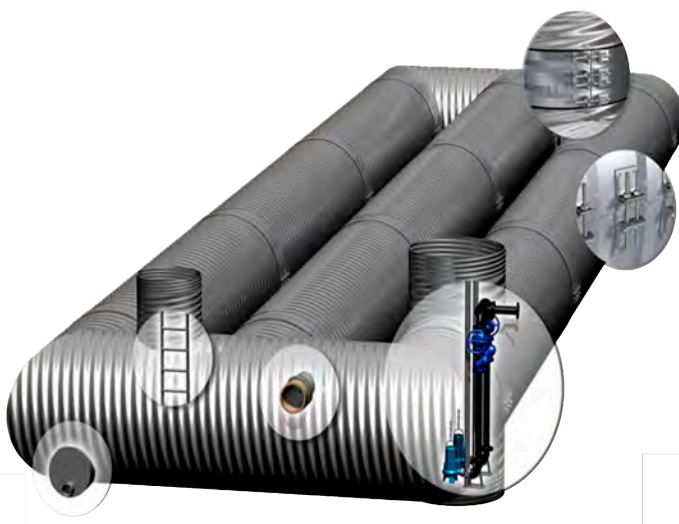
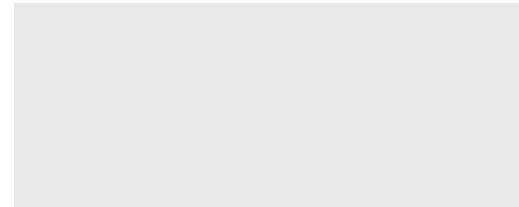
ViaCon 3 in 1 – why install 3 separate products when you only need one. Usually designed as a single run of pipe around a building to collect the roof drainage and surface water. This solution removes the need for a standard rectangular storage tank. The attenuation volume is stored in the pipe, the pipe also acts as a carrier pipe, the pipe also acts as a carrier pipe, with manholes all built-in.



# Versatility



With this scheme in central London, we design the attenuation to zigzag in amongst the piles



# Bespoke designs

ViaCon – all built in, built in flow regulators and pumps, removing the need for separate flow control and pump chambers



**VIACON**

[www.viacongroup.com](http://www.viacongroup.com)

Telephone 01744 452900. [www.viacon.co.uk](http://www.viacon.co.uk)